



**ATTENTION**

If any components of this unit are broken,  
do not operate properly, or for product returns,  
please contact PragoTrade LLC at

**1-800-814-4895**

*Outside the U.S. call 440-638-3131.*

For the online catalog, log onto [www.westonsupply.com](http://www.westonsupply.com).

*Exclusively imported by PragoTrade LLC Strongsville, Ohio*  
**[www.pragotrade.com](http://www.pragotrade.com)**

**WESTON**  
BRAND

**MEAT  
CUBER/TENDERIZER  
GRINDER ATTACHMENT**

**MODEL # 07-3201-W-A**



*Grinder Not Included*



# MEAT CUBER/TENDERIZER GRINDER ATTACHMENT

MODEL # 07-3201-W-A

## COMPONENT LIST

DIAGRAM NO.	PART DESCRIPTION	PART NO.
1	Lower Housing	07-3184-A
2	Top Housing	07-3181-A
3	Shaft Adapter	07-3213
4	Blade Rack Assembly	07-3103
5	Left Comb	07-3119
6	Right Comb	07-3118
7	Housing Thumbscrews (2)	07-3166
8	Electric Grinder Adapter	07-3202
9	Chute	07-3182-A
10	Shaft Adapter Set Screw	07-3187
11	Adapter Mounting Bolt (2)	07-3188
12	Stainless Steel Tongs	07-3151
13	Nylon Bushing	07-3127
14	Screw & Lock Washers for Chute (2)	07-3183
15	Allen Wrench for Set Screws	07-3186
16	Allen Wrench for Chute/Adapter	07-3178
17	Shaft Clip (2)	07-3165

If any components of this unit are broken or the unit does not operate properly, call PragoTrade LLC Toll Free at

**1-800-814-4895**

Monday thru Friday 8:00am-5:00pm EST.  
Outside the U.S. call 440-638-3131

## WARRANTY INFORMATION

SAVE THIS WARRANTY INFORMATION FOR YOUR RECORDS!

PragoTrade LLC warrants to the ORIGINAL RETAIL PURCHASER of this product that if operated in accordance with the printed instruction accompanying it, then for a period of 1 year from the date of purchase, the product shall be free from defects in material and workmanship.

The Warranty Card, along with a copy of the original receipt, must be received by PragoTrade LLC within 30 days from purchase date for the warranty to apply. Failure to send the completely filled out Warranty Card, along with a copy of the original receipt, will void the warranty.

The product must be delivered to or shipped freight prepaid to PragoTrade LLC for warranty services, in either its original packaging or similar packaging affording an equal degree of protection. Damage due to shipping is not the responsibility of the company. PragoTrade LLC charges a \$35.00 per hour bench charge. NOTE: No repairs will be started without the authorization of the customer. The return shipping cost to the customer will be added to the repair invoice.

PragoTrade LLC will repair (or at its discretion, replace) the product free of charge, if in the judgment of the company, it has been proven to be defective as to seller's labor and material, within the warranty period.

New or rebuilt replacements for factory defective parts will be supplied for one (1) year from the date of purchase. Replacement parts are warranted for the remainder of the original warranty period.

For non-warranty repairs, contact PragoTrade's Customer Service at 1-800-814-4895 M-F 8am-5pm EST (outside of the United States 440-638-3131) to obtain a Return Authorization Number (RMA Number). PragoTrade will refuse all returns that do not contain this number. **DO NOT RETURN THE UNIT WITHOUT PROPER AUTHORIZATION FROM PRAGOTRADE LLC.**

**LIMITATIONS:** The warranty is void if the product is used for any purpose other than that for which it is designed. The product must not have been previously altered, repaired, or serviced by anyone else other than PragoTrade LLC. If applicable, the serial number must not have been altered or removed. The product must not have been subjected to accident in transit or while in the customer's possession, misused, abused, or operated contrary to the instructions contained in the instruction manual. This includes failure caused by neglect of reasonable and necessary maintenance, improper line voltage and acts of nature. This warranty is not transferable and applies only to U.S. and Canadian sales.

Except to the extent prohibited by applicable law, no other warranties whether expressed or implied, including warranty merchantability and fitness for a particular purpose, shall apply to this product. Under no circumstances shall PragoTrade LLC be liable for consequential damages sustained in connection with said product and PragoTrade LLC neither assumes nor authorizes any representative or other person to assume for it any obligation or liability other than such as is expressly set forth herein. Any applicable implied warranties are also limited to the one (1) year period of the limited warranty.

This warranty covers only the product and its specific parts, not the food or other products processed in it. **CUT ALONG THE DOTTED LINE AND SEND THE WARRANTY CARD ALONG WITH A COPY OF YOUR ORIGINAL PURCHASE RECEIPT TO:**

**PragoTrade LLC**  
20365 Progress Drive, Strongsville, OH 44149

## WARRANTY CARD

SEND THIS CARD ALONG WITH A COPY OF YOUR ORIGINAL PURCHASE RECEIPT

Customer Name: \_\_\_\_\_

Address: \_\_\_\_\_

City/State/Zip: \_\_\_\_\_

Telephone Number: (\_\_\_\_\_) \_\_\_\_\_

E-Mail Address: \_\_\_\_\_

Original Date of Purchase: \_\_\_\_/\_\_\_\_/\_\_\_\_

Product Model #: \_\_\_\_\_

Serial # (if applicable): \_\_\_\_\_

## CLEARING A JAM

**WARNING!** Before cleaning, assembling or disassembling the Cuber/Tenderizer Attachment make sure the **PLUG** of the **GRINDER IS REMOVED FROM THE OUTLET/POWER SOURCE!** **ALWAYS** unplug the grinder when not in use.

- If meat becomes jammed in the **Cuber/Tenderizer**, turn off the electric grinder and unplug the grinder from the power source.

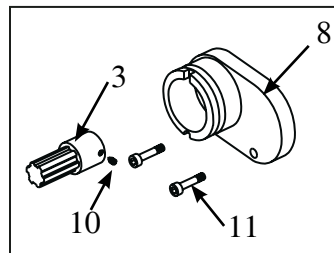
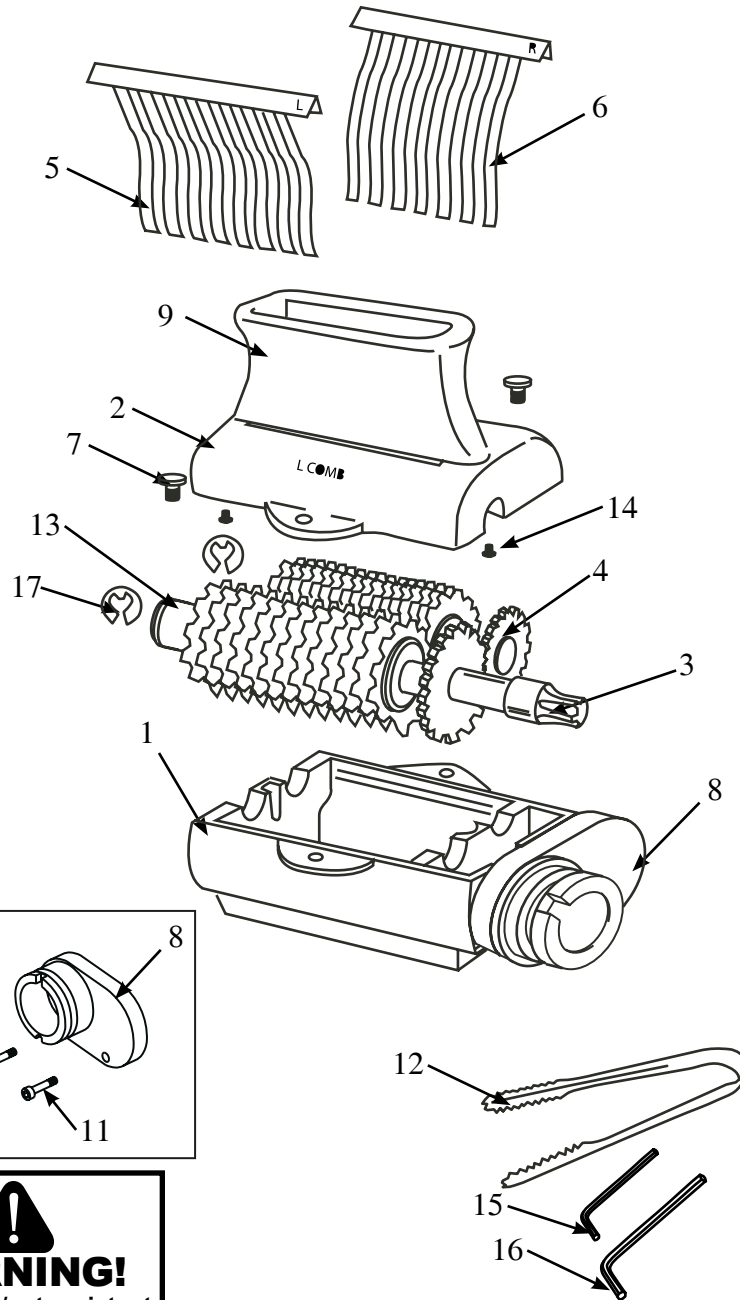
- Remove the **Combs**.

- Unscrew the **Housing Screws** and remove the **Top Housing** from the unit.

- Using the **Tongs**, remove any meat that may be jammed in the **Blade Racks**.

- **DO NOT** use your fingers to remove any meat. The **Blades** on the **Driven** and **Driving Racks** are very sharp. **Always wear cut-resistant gloves when handling the Blade assembly.**

**WARNING!**  
Protective/cut-resistant  
Kevlar Gloves are  
recommended  
whenever handling the  
Blade assembly!



**WARNING!**  
Protective/cut-resistant  
Kevlar Gloves are  
recommended  
whenever handling the  
Blade assembly!

## ADDITIONAL ACCESSORIES AVAILABLE

6" Jerky Slicer Blade	07-3302
Food-Grade Silicone Spray	03-0101-W
Kevlar Gloves Small	34-0101
Kevlar Gloves Medium	34-0102
Kevlar Gloves Large	34-0103
Kevlar Gloves Extra Large	34-0104
#22 Pro-Series Electric Meat Grinder	08-2201-W
#32 Pro-Series Electric Meat Grinder	08-3201-W
Pro-2100 Vacuum Sealer	65-0101
Vacuum Sealer Bags Multi Pack	30-0107-W

These products and many more products can be ordered by visiting  
[www.westonsupply.com](http://www.westonsupply.com) or by calling  
 Pragotrade LLC Toll Free at 1-800-814-4895  
 Monday thru Friday 8:00am-5:00pm EST.  
 Outside the U.S. call 440-638-3131

## GENERAL SAFETY RULES

### **WARNING!**

READ AND FULLY UNDERSTAND ALL INSTRUCTIONS AND WARNINGS PRIOR TO USING THIS PRODUCT. YOUR SAFETY IS MOST IMPORTANT! FAILURE TO COMPLY WITH PROCEDURES AND SAFE GUARDS MAY RESULT IN SERIOUS INJURY OR PROPERTY DAMAGE. **REMEMBER: YOUR PERSONAL SAFETY IS YOUR RESPONSIBILITY!**

- NEVER REACH INTO the Cuber/Tenderizer.** Doing so could cause serious injury. **ALWAYS USE THE PROVIDED TONGS.**
- DO NOT** push the **Tongs** or other utensils into the **Blades**.
- NEVER** use fingers to scrape food away from the **Cuber/Tenderizer** while the grinder is in operation. **SEVERE INJURY MAY RESULT.**
- KEEP FINGERS CLEAR OF THE BLADES AT ALL TIMES.** Failure to do so may result in personal injury. The **Cutting Blades/Blade Assembly** is very sharp. It is recommended to wear Kevlar, cut resistant gloves when handling the **Blades**.
- DO NOT** press or push meat into the **Chute** with your fingers or any other object. Doing so may cause personal injury and/or damage to the unit.
- NEVER LEAVE THE Cuber/Tenderizer UNATTENDED.** Be safe, **DISCONNECT** the **Grinder** from power source before leaving the work area. Close supervision is necessary when any appliance is used near children. This appliance is **NOT** to be used by children.
- FOLLOW ALL MANUFACTURER'S INSTRUCTIONS AND SAFETY GUIDELINES** for operating the grinder.
- NEVER** use any accessories or parts from other manufacturers. Doing so will **VOID YOUR WARRANTY** and may cause fire, electrical shock or injury.
- Thoroughly clean all parts that will come into contact with food before using the **Tenderizer/Cuber**. Wash all parts by hand and dry thoroughly. **WARNING!** Protective/cut-resistant Kevlar gloves are recommended when handling the blade assembly.
- DO NOT** attempt to tenderize meat with bones or other hard items. Damage to the machine will occur.
- TIE BACK** loose hair and clothing, and roll up long sleeves before operating the **Cuber/Tenderizer**. **REMOVE** ties, rings, watches, bracelets, or other jewelry before operating the **Cuber/Tenderizer**.
- WEAR EYE PROTECTION.** Wear safety glasses. Everyday eye glasses are not safety glasses. Safety glasses conform to ANSI Z87.1 requirements. Note: approved safety glasses have Z87 printed or stamped on them.
- DO NOT** use outdoors.
- DO NOT** use the **Cuber/Tenderizer** while under the influence of drugs, medications or alcohol.

## SAVE THESE INSTRUCTIONS!

Refer to them often and use them to instruct others.

## DISASSEMBLY & CLEANING INSTRUCTIONS

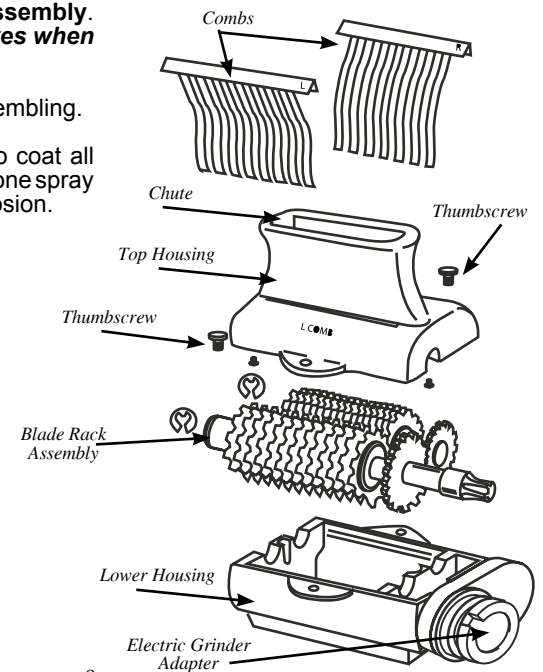
**WARNING!** Before cleaning, assembling or disassembling the **Cuber/Tenderizer Attachment** make sure the **PLUG of the GRINDER IS REMOVED FROM THE OUTLET/POWER SOURCE!** **ALWAYS** unplug the grinder when not in use.

- ALWAYS** disconnect the grinder from the power source before attempting to disassemble or clean the **Cuber/Tenderizer**.
- Keep children at a safe distance from unit while cleaning or operating.
- Remove the **Cuber/Tenderizer** from the grinder.
- Remove the **Combs** from the **Top Housing** by lifting up on **Combs**. *Figure 6*
- Remove the two **Thumbscrews** from the **Top Housing**. Set aside.
- Remove the **Top Housing**. **WARNING! This will expose the Cutting Blades. Always wear cut-resistant gloves when handling the Blade assembly.**
- Using the provided **Allen Wrench**, remove the **Screws** to remove **Chute** from the **Top Housing**. Set the **Screws** and **Lock Washers** aside.
- Carefully lift the **Blade Rack Assembly** from the **Lower Housing**.

9. Wash all parts thoroughly with warm, soapy water. Rinse with clear water. A long bristle brush is recommended for cleaning the **Blade Rack Assembly**. **Always wear cut-resistant gloves when handling the Blade assembly.**

10. Dry thoroughly before re-assembling.

**NOTE:** It is highly suggested to coat all metal parts with a food-grade silicone spray (sold separately) to prevent corrosion.



## DIRECTIONS FOR USE

**WARNING!** Before cleaning, assembling or disassembling the Cuber/Tenderizer Attachment make sure the **PLUG** of the **GRINDER IS REMOVED FROM THE OUTLET/POWER SOURCE!** ALWAYS unplug the grinder when not in use.

**BE SURE TO FOLLOW ALL SAFETY WARNINGS AND PRECAUTIONS THAT ARE CONTAINED IN YOUR GRINDER INSTRUCTION MANUAL BEFORE USING THE CUBER/TENDERIZER ATTACHMENT WITH THE ELECTRIC GRINDER! NEVER LEAVE MACHINE UNATTENDED!**



- Make sure the **Cuber/Tenderizer** is fully assembled and correctly attached to the electric grinder.
- Remove all bones or hard items in the meat before tenderizing or cubing. Damage to the unit may occur if bones or hard objects are pushed through.
- Do not cube or tenderize meat that is more than 1" (2.5 cm) thick. Thicker meat may get lodged in **Blades**, which may cause damage to the product.
- Use **Tongs** to insert the meat to be tenderized or cubed into the mouth of the **Chute** until the meat comes in contact with the **Blades**. The meat will be pulled through the unit by the **Blade** movement.
- If a piece of meat is too short to reach the **Blades**, use the provided **Tongs** to guide the meat to the **Blades**.
- **CAUTION! DO NOT** press or push the meat into the **Chute** with your fingers or any other object. Doing so may cause personal injury and/or damage to the unit. **DO NOT** push the **Tongs** or other utensils into the **Blades**.
- It may be necessary to pass the meat through the **Cuber/Tenderizer** several times to obtain the desired results. You may also pass the meat through at different angles if a different result is desired.
- When finished tenderizing or cubing the meat, turn off the electric grinder and unplug it from the power source.
- Clean the unit before and after each use.

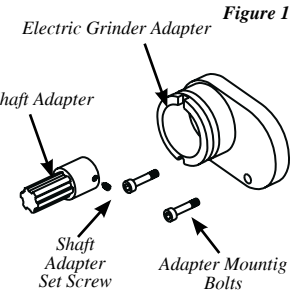
## ASSEMBLY INSTRUCTIONS

**WARNING!** Before cleaning, assembling or disassembling the Cuber/Tenderizer Attachment make sure the **PLUG** of the **GRINDER IS REMOVED FROM THE OUTLET/POWER SOURCE!** ALWAYS unplug the grinder when not in use.

**BE SURE TO FOLLOW ALL SAFETY WARNINGS AND PRECAUTIONS THAT ARE CONTAINED IN YOUR GRINDER INSTRUCTION MANUAL BEFORE USING THE CUBER/TENDERIZER ATTACHMENT WITH THE ELECTRIC GRINDER! NEVER LEAVE THE MACHINE UNATTENDED!**

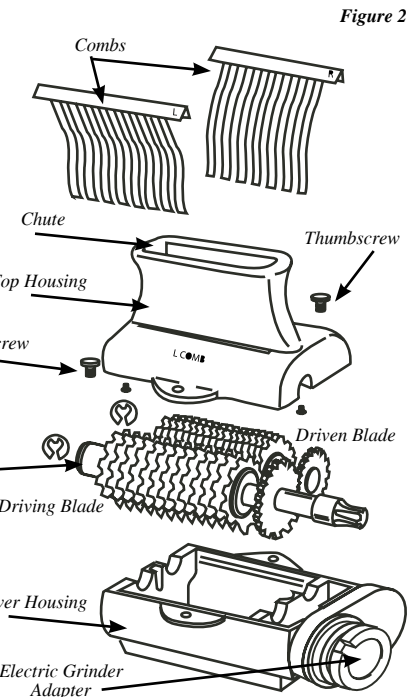


**PRIOR TO FIRST USE:** Disassemble the **Cuber/Tenderizer** and hand wash each part in warm, soapy water. Rinse with clear water. Dry thoroughly before re-assembling. **WARNING! This will expose the Cutting Blades. ALWAYS wear cut-resistant gloves when handling the Blade assembly.**



1. If the **Shaft Adapter** is not already attached to the **Cuber/Tenderizer** attachment, loosen the **Set Screw** on the **Shaft Adapter** using the supplied **Allen Wrench**. Slide the **Shaft Adapter** onto the **Driving Blade Rack Shaft** and tighten the **Set Screw**. **DO NOT** over tighten. *Figure 1*

2. To install the **Chute** onto the **Top Housing**, remove the **Top Housing** from the **Lower Housing**. Secure the **Chute** to the **Top Housing** using the two **Screws** and **Lock Washers**. **DO NOT** over tighten. *Figure 2*



3. Insert the **Driving Blade Rack** into the **Lower Housing**, guiding the **Drive Shaft** into the bearing journals. **NOTE:** When installing the **Blade Rack Assembly**, you must position the drive shaft with the **Shaft Adapter** through the hole in the **Electric Grinder Adapter** before seating into the bearing journals. *Figure 2*

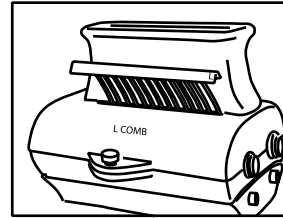
4. Install the **Driven Blade Rack** into the **Lower Housing** making sure the teeth on the **Driving Blade Rack** are properly meshed together with the teeth on the **Driven Blade Rack**.

5. Position the **Top Housing** onto the **Lower Housing** and line up the screw holes.

6. Secure the **Top Housing** to the **Lower Housing** using the **Housing Thumbscrews**. **DO NOT** over tighten.

7. Insert the **Left Comb** and **Right Comb** into the **Top Housing**. *Figure 3* **NOTE:** The **Left Comb** is marked with an “L” on the upper portion of the **Comb**. The **Top Housing** is marked with an “L Comb” and “R Comb” to aid in **Comb** installation.

*Figure 3*



## ATTACHING TO THE GRINDER

**! WARNING!** Before cleaning, assembling or disassembling the **Cuber/Tenderizer Attachment** make sure the **PLUG of the GRINDER IS REMOVED FROM THE OUTLET/POWER SOURCE!** **ALWAYS unplug the grinder when not in use.**

**BE SURE TO FOLLOW ALL SAFETY WARNINGS AND PRECAUTIONS THAT ARE CONTAINED IN YOUR GRINDER INSTRUCTION MANUAL BEFORE USING THE CUBER/TENDERIZER ATTACHMENT WITH THE ELECTRIC GRINDER! NEVER LEAVE MACHINE UNATTENDED!**

1. ALWAYS disconnect the grinder from the power source before attaching the **Cuber/Tenderizer**.
2. Unscrew the head locking knob (turn counter-clockwise) on the electric grinder until the end of the threads are no longer protruding into the grinder output housing.
3. Line up the grinder pin with the **Grinder Adapter** notch on the **Cuber/Tenderizer**. Line up the **Shaft Adapter** splines with the grinder output housing. *Figure 4*

**NOTE:** You may have to reposition the **Cuber/Tenderizer Shaft** splines so that they match up with the grinder output shaft. Make sure the grinder head locking knob lines up with the groove on the electric grinder adapter.

4. Once the **Cuber/Tenderizer Attachment** is properly positioned on to the electric grinder, tighten the grinder head locking knob.

*Figure 4*

