



ATTENTION

If any components of this unit are broken,
do not operate properly, or for product returns,
please contact PragoTrade LLC at

1-800-814-4895

Outside the U.S. call 440-638-3131.

For the online catalog, log onto www.westonsupply.com.

Exclusively imported by PragoTrade LLC Strongsville, Ohio
www.pragotrade.com

WESTON
BRAND
**MANUAL MEAT
CUBER/TENDERIZER
INSTRUCTIONS**

MODEL # 07-3101-W-A



REV 032309

WESTON BRAND

MANUAL MEAT CUBER/TENDERIZER

MODEL # 07-3101-W-A

COMPONENT LIST

DIAGRAM NO.	PART DESCRIPTION	PART NO.
1	Lower Housing	07-3184-A
2	Top Housing	07-3181-A
3	Handle	07-3125-A
4	Stainless Steel Blade Rack Assembly	07-3103
5	Stainless Steel Left Comb	07-3119
6	Stainless Steel Right Comb	07-3118
7	Housing Thumbscrew (2)	07-3166
8	Handle Thumbscrew	07-3145
9	C-Clamp (2)	07-3105
10	Base	07-3111
11	Left Leg	07-3179-L-A
12	Right Leg	07-3179-R-A
13	Chute	07-3182-A
14	Nylon Bushing	07-3127
15	Stainless Steel Tongs	07-3151
16	Screw for Chute and Base (6)	07-3183
17	Screw for Legs (4)	07-3180
18	Allen Wrench for Chute & Base Screws	07-3178
19	Allen Wrench for Leg Screws	07-3185
20	Shaft Clip (2)	07-3165

If any components of this unit are broken or the unit does not operate properly, call PragoTrade LLC Toll Free at

1-800-814-4895

Monday thru Friday 8:00am-5:00pm EST.
Outside the U.S. call 440-638-3131

WARRANTY INFORMATION

SAVE THIS WARRANTY INFORMATION FOR YOUR RECORDS!

PragoTrade LLC warrants to the ORIGINAL RETAIL PURCHASER of this product that if operated in accordance with the printed instruction accompanying it, then for a period of 1 year from the date of purchase, the product shall be free from defects in material and workmanship.

The Warranty Card, along with a copy of the original receipt, must be received by PragoTrade LLC within 30 days from purchase date for the warranty to apply. Failure to send the completely filled out Warranty Card, along with a copy of the original receipt, will void the warranty.

The product must be delivered to or shipped freight prepaid to PragoTrade LLC for warranty services, in either its original packaging or similar packaging affording an equal degree of protection. Damage due to shipping is not the responsibility of the company. PragoTrade LLC charges a \$35.00 per hour bench charge. NOTE: No repairs will be started without the authorization of the customer. The return shipping cost to the customer will be added to the repair invoice.

PragoTrade LLC will repair (or at its discretion, replace) the product free of charge, if in the judgment of the company, it has been proven to be defective as to seller's labor and material, within the warranty period.

New or rebuilt replacements for factory defective parts will be supplied for one (1) year from the date of purchase. Replacement parts are warranted for the remainder of the original warranty period.

For non-warranty repairs, contact PragoTrade's Customer Service at 1-800-814-4895 M-F 8am-5pm EST (outside of the United States 440-638-3131) to obtain a Return Authorization Number (RMA Number). PragoTrade will refuse all returns that do not contain this number. **DO NOT RETURN THE UNIT WITHOUT PROPER AUTHORIZATION FROM PRAGOTRADE LLC.**

LIMITATIONS: The warranty is void if the product is used for any purpose other than that for which it is designed. The product must not have been previously altered, repaired, or serviced by anyone else other than PragoTrade LLC. If applicable, the serial number must not have been altered or removed. The product must not have been subjected to accident in transit or while in the customer's possession, misused, abused, or operated contrary to the instructions contained in the instruction manual. This includes failure caused by neglect of reasonable and necessary maintenance, improper line voltage and acts of nature. This warranty is not transferable and applies only to U.S. and Canadian sales.

Except to the extent prohibited by applicable law, no other warranties whether expressed or implied, including warranty merchantability and fitness for a particular purpose, shall apply to this product. Under no circumstances shall PragoTrade LLC be liable for consequential damages sustained in connection with said product and PragoTrade LLC neither assumes nor authorizes any representative or other person to assume for it any obligation or liability other than such as is expressly set forth herein. Any applicable implied warranties are also limited to the one (1) year period of the limited warranty.

This warranty covers only the product and its specific parts, not the food or other products processed in it. **CUT ALONG THE DOTTED LINE AND SEND THE WARRANTY CARD ALONG WITH A COPY OF YOUR ORIGINAL PURCHASE RECEIPT TO:**

PragoTrade LLC
20365 Progress Drive, Strongsville, OH 44149

WARRANTY CARD

SEND THIS CARD ALONG WITH A COPY OF YOUR ORIGINAL PURCHASE RECEIPT

Customer Name: _____

Address: _____

City/State/Zip: _____

Telephone Number: (_____) _____

E-Mail Address: _____

Original Date of Purchase: ____/____/____

Product Model #: _____

Serial # (if applicable): _____

DISASSEMBLY & CLEANING INSTRUCTIONS

1. Keep children at a safe distance from machine while cleaning.

2. Remove the **Handle Thumbscrew** from the **Handle**. Remove **Handle** from the **Blade Rack Shaft** by unscrewing the **Handle Thumbscrew**.

3. Remove the **Combs** from the **Top Housing** by lifting up on **Combs**.

4. Remove the two **Thumbscrews** from the **Top Housing**.

5. Remove the **Top Housing**. **WARNING! This will expose the Cutting Blades. Take care when handling the Blade Assembly.**

6. Using the provided **Allen Wrench**, remove the **Chute** from the **Top Housing**.

7. Carefully lift the **Blade Rack Assembly** from the **Lower Housing**.

8. Disassemble the **Lower Housing** from the **Legs**. Disassemble the **Legs** from the **Base**.

8. Wash all parts thoroughly with warm, soapy water. Rinse with clear water. A long bristle brush is recommended for cleaning the **Blade Rack Assembly**. Take extra care when handling the **Blade Racks**.

9. Dry thoroughly before re-assembling.

NOTE: It is highly suggested to coat all metal parts with a food-grade silicone spray (sold separately) to prevent corrosion.

DIRECTIONS FOR USE

- Remove all bones or hard items in the meat before tenderizing or cubing. Damage to the unit may occur if bones or hard objects are pushed through.

- Do not cube or tenderize meat that is more than 1" (2.5 cm) thick. Thicker meat may get lodged in **Blades**, which may cause damage to the product.

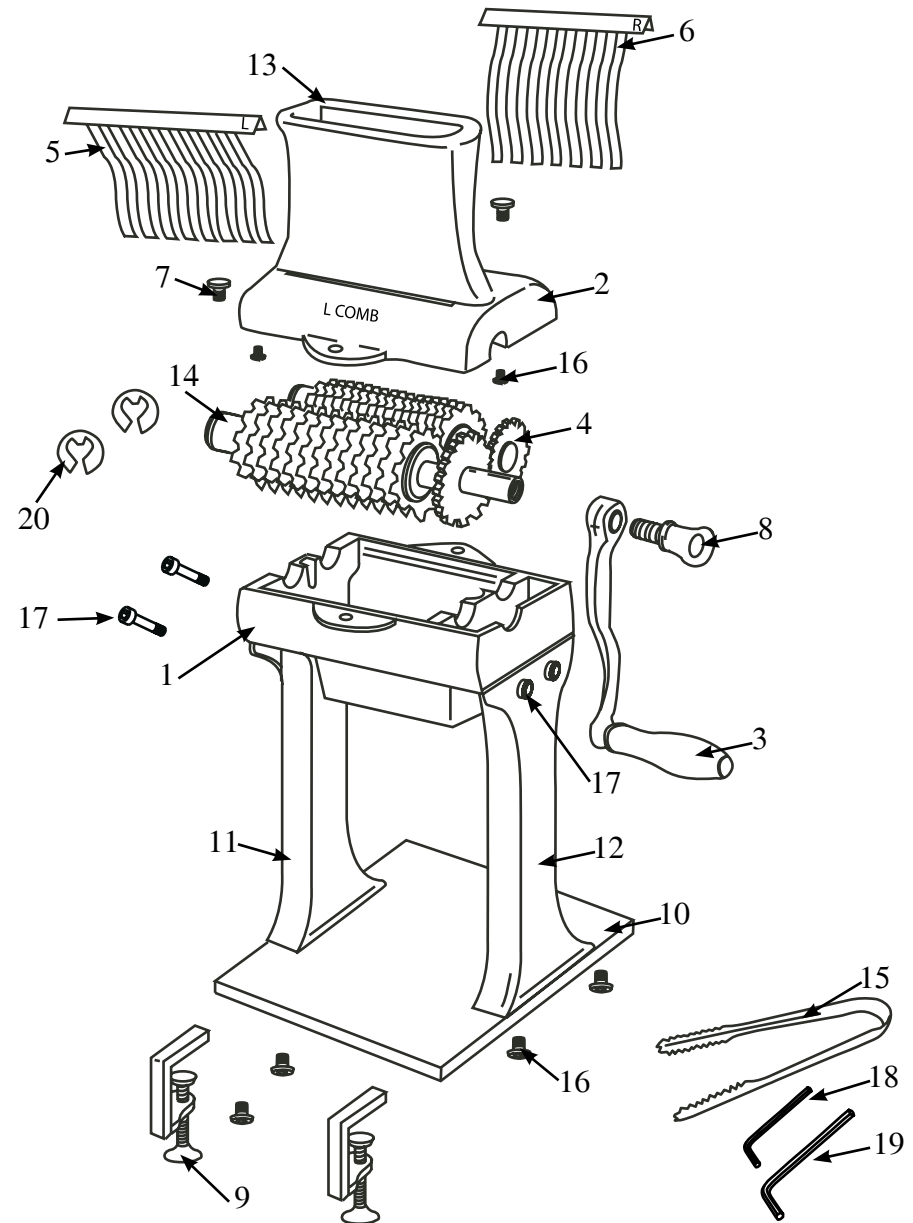
- Insert the meat to be tenderized or cubed into the mouth of the **Chute** until the meat comes in contact with the **Blades**. Turn the **Handle** in a clockwise motion. This will pull the meat through the **Blades**. Insert only one piece of meat at a time to prevent jamming.

- If a piece of meat is too short to reach the **Blades**, use the provided **Tongs** to guide the meat to the **Blades**.

- CAUTION! DO NOT** press or push the meat into the **Chute** with your fingers or any other object. Doing so may cause personal injury and/or damage to the unit. **DO NOT** push the **Tongs** or other utensils into the **Blades**.

- It may be necessary to pass the meat through the **Cuber/Tenderizer** several times to obtain the desired results. You may also pass the meat through at different angles if a different result is desired.

- Clean the unit before and after each use.



GENERAL SAFETY RULES



READ AND FULLY UNDERSTAND ALL INSTRUCTIONS AND WARNINGS PRIOR TO USING THIS PRODUCT. YOUR SAFETY IS MOST IMPORTANT! FAILURE TO COMPLY WITH PROCEDURES AND SAFEGUARDS MAY RESULT IN SERIOUS INJURY OR PROPERTY DAMAGE. **REMEMBER: YOUR PERSONAL SAFETY IS YOUR RESPONSIBILITY!**

- NEVER REACH INTO** the **Cuber/Tenderizer**. Doing so could cause serious injury. **ALWAYS USE THE PROVIDED TONGS.**
- KEEP FINGERS CLEAR OF THE BLADES AT ALL TIMES.** Failure to do so may result in personal injury. The **Cutting Blades/Blade Assembly** is very sharp. It is recommended to wear Kevlar, cut resistant gloves when handling the **Blades**.
- DO NOT** press or push meat into the **Chute** with your fingers or any other object. Doing so may cause personal injury and/or damage to the unit.
- NEVER** use fingers to scrape food away from the **Cuber/Tenderizer** while the grinder is in operation. **SEVERE INJURY MAY RESULT.**
- DO NOT** push the **Tongs** or other utensils into the **Blades**.
- NEVER LEAVE THE Cuber/Tenderizer UNATTENDED.** Close supervision is necessary when any appliance is used near children. This appliance is **NOT** to be used by children.
- NEVER** use any accessories or parts from other manufacturers. Doing so will VOID YOUR WARRANTY.
- Thoroughly clean all parts that will come into contact with food before using the **Tenderizer/Cuber**. Wash all parts by hand and dry thoroughly. **WARNING!** Protective/cut-resistant Kevlar gloves are recommended when handling the blade assembly.
- DO NOT** attempt to tenderize meat with bones or other hard items. Damage to the machine will occur.
- TIE BACK** loose hair and clothing, and roll up long sleeves before operating the **Cuber/Tenderizer**. **REMOVE** ties, rings, watches, bracelets, or other jewelry before operating the **Cuber/Tenderizer**.
- DO NOT** use the **Cuber/Tenderizer** while under the influence of drugs, medications or alcohol.

SAVE THESE INSTRUCTIONS!

Refer to them often and use them to instruct others.

ADDITIONAL ACCESSORIES AVAILABLE

6" Jerky Slicer Blade	07-3302
Food-Grade Silicone Spray	03-0101-W
Kevlar Gloves Small	34-0101
Kevlar Gloves Medium	34-0102
Kevlar Gloves Large	34-0103
Cuber/Tenderizer Motor Attachment	01-0103-W
Pro-2100 Vacuum Sealer	65-0101
Vacuum Sealer Bags Multi Pack	30-0107-W

These products and many more products can be ordered by visiting www.westonsupply.com or by calling Pragotrade LLC Toll Free at 1-800-814-4895
Monday thru Friday 8:00am-5:00pm EST.
Outside the U.S. call 440-638-3131

ASSEMBLY INSTRUCTIONS

1. Connect the **Left and Right Legs** to the **Base** using the provided **Allen Wrench and Screws**.

2. Using an **Allen Wrench and Screws**, attach the **Left and Right Legs** to the **Lower Housing**. *Figure 1*

3. Install the **Chute** to the **Top Housing** using an **Allen Wrench, Screws**.

4. Insert the **Blade Rack Assembly** into the **Lower Housing**, guiding the **Drive Shaft** into the bearing journals. Make sure the teeth of the **Blade Racks** are properly meshed together.

5. Position the **Top Housing** onto the **Lower Housing** and line up the screw holes.

6. Secure the **Top Housing** to the **Lower Housing** using the **Housing Thumbscrews**. **DO NOT OVERTIGHTEN!**

7. Insert the **Left Comb and Right Comb** into the **Top Housing**. *Figure 2*

NOTE: The **Left Comb** is marked with an "L" on the upper portion of the **Comb**. The **Top Housing** is marked with an "L Comb" and "R Comb" to aid in **Comb** installation.

8. Install **Handle** onto the **Blade Rack Shaft**. Secure the **Handle** to **Blade Rack Shaft** with the **Handle Thumbscrew**.

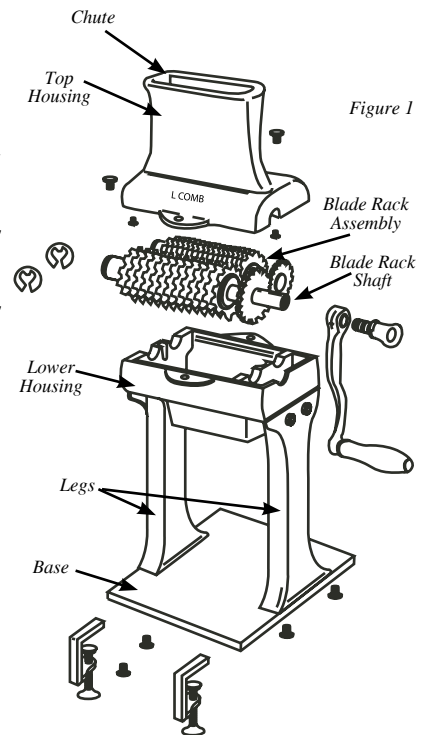


Figure 2

